

CAMPAIGN AGAINST I-933 COMES DOWN TO THE WIRE

Voters have an exceptionally important choice to make about Washington's environment and quality of life on Election Day this year. Initiative 933 is argu-

ably the most extreme rollback of community and environmental protections our country has ever seen.

Targeting everything from the Growth Management Act and the Forest Practices Act to local zoning, I-933 creates a lose-lose choice for communities across the state: do we pay billions of dollars to corporations and property owners for the right to enforce existing laws, or do we waive common sense rules that protect communities (and property values) from irresponsible actions.

The No on 933 Campaign has organized a remarkably broad coalition of opposition – over 200 organizations ranging from the League of Women Voters to the State Council of Firefighters to the Union of Food and Commercial Workers to the Greater Seattle Chamber of Commerce.

This Coalition's mission is to make sure that millions of voters understand that I-933 will harm their communities and quality of life. Attorney General Rob McKenna has made the challenge much more difficult by giving the initiative an extremely deceptive and very favorable sounding ballot title (see P.2).

Despite the ballot title, people oppose the initiative after they learn it sets up a pay or waive system that will cost them billions of dollars and carve devastating loopholes into the laws that protect their communities from irresponsible development.

continued on p. 5

\$? \$?

NO 933!

**TOO MANY QUESTIONS
TOO MANY LOOPHOLES
TOO COSTLY FOR TAXPAYERS**

In this issue:

- From the Director.....2
- County Spotlight.....3
- Global Warming.....4
- Legal Briefs.....6
- Futurewise People.....8
- Transitions.....9
- What's Happening.....10
- Holiday Giving.....12

Board of Directors

Mary McCumber,
President
Will Stelle, *Vice President*
Bill Ross, *Treasurer*
Mahlon Clements, *Secretary*

Board Members

Jay Arnold
Margot Blacker
David Bricklin
Laura Dobbins
Jeff Eustis
Bart Haggin
Roberta Lewandowski
Bruce Lorig
Henry McGee, Jr.
Joanie Parsons
Sandra Romero
Dave Russell
Lincoln Rutter
Greg Smith
Jared Smith
Gina Stark
Margaret Studer
Jodie Vice
Daryl Williams

Staff

Aaron Ostrom, *Executive Director*
Megan Blanck-Weiss, *Field Director*
Justine Guarda, *Associate Director*
Kristin Kelly, *Snohomish Field Organizer*
Kitty Klitzke, *Eastern WA Field Organizer*
Lori Eagle, *Office Manager*
Sydney McComas, *Urban Policy Director*
Tim Trohimovich, *Planning Director*
Angela Uhl, *Development Director*
Chieu Van, *Membership and Outreach Coordinator*
Keith Scully, *Legal Director*

Main Office

1617 Boylston Ave., Suite 200
Seattle, WA 98122
Tel: 206-343-0681
Fax: 206-709-8218

Snohomish County Office

425-923-8625

Spokane County Office

509-838-1965

www.futurewise.org

info@futurewise.org



try to avoid using sports analogies, because I know they just aren't worth much for folks who aren't sports fans. But sometimes you're just stuck with them, because they fit too well.

When King County Executive Ron Sims spoke at the No on 933 Kickoff, he closed by urging us to make sure "we left it all on the field for this one." It's a message that soccer and football coaches deliver to their team before a big game. They want their players to put everything they have into winning the game; if they have any energy left when they walk off the field, they didn't try hard enough.

It's the right message for the campaign against Initiative 933. I-933 is arguably the most radical and extreme rollback of environmental community protections our country has ever seen. The future it offers is a nightmare of destruction and chaos, and if you care deeply about the places and qualities that make Washington special, it will be a future of heartbreak after heartbreak.

And it could pass. Attorney General Rob McKenna is extremely conservative, especially when it comes to property rights measures, and he wrote the ballot title (the description you read on your ballot when you vote.) He took his ballot title straight out of the Farm Bureau's polling: "This measure would require compensations when government regulation damages the use or value of private property,..." That sounds pretty reasonable to almost anyone.

The No campaign's job is to explain that what looks like an apple is really a lemon to millions of voters. We can and will do that. But we need your help to succeed. **The No Campaign will win if people who care about and understand the threat that I-933 represents give their time and money very generously.**

This is not just another bad initiative – it's one of the worst initiatives in the history of the United States. I-933 is not just attacking some rules – it is attacking the notion of rules; and it's not just rolling them back a little - it's attempting to blow up the notion that communities have a right to limit destructive activities.

Futurewise is leaving everything on the field with this one. The stakes are much too high to do anything else. Futurewise has contributed over \$150,000 (and counting) to the campaign. Our Field Director (Megan Blanck-Weiss) took a leave of absence to be the Campaign's Field Director. We are all putting serious time into the initiative for a very simple reason. The consequences of allowing it to pass are completely unacceptable.

With your support we can and will win this one. If you haven't already contributed time and money to the No Campaign, please do it now. www.NoOn933.org.

Aaron Ostrom, Executive Director

Futurewise and Local Partners Improve Planning and Politics in Kittitas County

Tim Trohimovich, Futurewise Planning Director

Kittitas County is the sixth fastest growing county in Washington State, but the growth has not been graceful. Due to poor policies, Kittitas County is converting working farms, working forests, and rural areas into low density subdivisions. You can see this in the growth numbers, 54 percent of county's population growth occurred not in the county's leafy cities and towns, but in unincorporated Kittitas County.

These changes led several Kittitas County groups including RIDGE to ask Futurewise for help. Working together, these citizen groups and Futurewise prepared amendments to the county comprehensive plan to protect working farms and forests, protect rural Kittitas County, and to provide housing affordable to those who live and work in the county, not luxury McMansions. The policies also call for improvements to the county's trail system, more recreational opportunities, and better protection for the county's treasured historic sites. These policies were endorsed not only by Futurewise and local groups, but the City of Roslyn too.

The partners came together none too soon. In addition to the coalition comprehensive plan proposed amendments, Kittitas County is considering proposals to rezone almost 7,000 acres of forest land in the county's famed Teanaway River Valley and hundreds of acres of farm land.

Our coalition convinced the Kittitas County Planning Commission to recommend denial of these amendments. We provided the planning commission with technical information and legal analysis, and turned out many local residents who described how the county's poorly planned growth was adversely affecting their lives and families. These adverse impacts include putting existing wells at risk of running dry and overloading narrow, two lane rural roads with traffic. Hunters, hikers, and others testified that new developments were cutting off access to public lands traditionally enjoyed by county residents. The community mem-



bers wore stickers asking the county to keep rural Kittitas County rural. Later this fall, the Board of Commissioners for Kittitas County will take up these amendments. Futurewise and coalition members are organizing to convince the board to follow the planning commission's recommendations.

While, the Board of County Commissioners takes up these recommendations, the Kittitas County Planning Commission is working on an update of the county's comprehensive plan. The Commission is using the comprehensive plan amendments proposed by Futurewise and its partners as they update the plan. Remarkably, during the planning commission's public hearings not a single person testified in opposition to our coalition's amendments.

Doug Kilgore, a county resident, observed that not only had the coalition's work empowered the Kittitas County Planning Commission to make better recommendations, but it was also changing the politics around good growth management in the county. This, he said, is needed to make the changes sustainable.

Kittitas County illustrates the kind of work Futurewise seeks to accomplish throughout Washington State. It brings local residents and property owners, with their local knowledge, together with the technical and organizing knowledge of Futurewise.

Futurewise and local Kittitas County groups are working to protect rural areas and forests in the Teanaway River Valley from rezoning.
Photo by Alan L. Bauer, www.alanbauer.com



SMART GROWTH PART OF THE SOLUTION TO GLOBAL WARMING

Chieu Van, Membership & Outreach Coordinator

Global warming in here and there is no doubt that we are beginning to feel the impacts firsthand. The data is now overwhelming. Arctic sea ice has shrunk by 250 million acres -- an area the size of California,

Maryland and Texas combined. If present warming trends continue, all glaciers in Glacier National Park could be gone by 2030. The park's Grinnell Glacier is already 90% gone. A NASA high-tech aerial survey shows that more than 11 cubic miles of ice is melting along Greenland's coasts yearly, accounting for 7% of the annual global sea level rise. The deadliest hurricanes, category 4 and 5, have nearly doubled during the period of 1990 - 2004, as compared to the period 1970 - 1985. The increase in intensity of hurricanes is the direct result of an increase in water temperature from global warming.

Sprawl Is a Major Contributor to Global Warming

The fact is that a tremendous amount of heat-trapping green house gasses causing global warming are generated by sprawling development that encourages increased reliance on cars and higher demands on infrastructure needs that pave over forests, farms and other green spaces. Irresponsible development or sprawl, creates neighborhoods further away from jobs, schools, shopping, health care and other amenities that are important to our daily lives. The traffic which results is Washington's largest single source of greenhouse gas emissions.

Sprawling cities have driving related energy consumption rates that are estimated to be three times higher than better planned, more compact cities

that offer transportation choices. More intensively developed areas are significantly more energy efficient than those spread out over large distances.

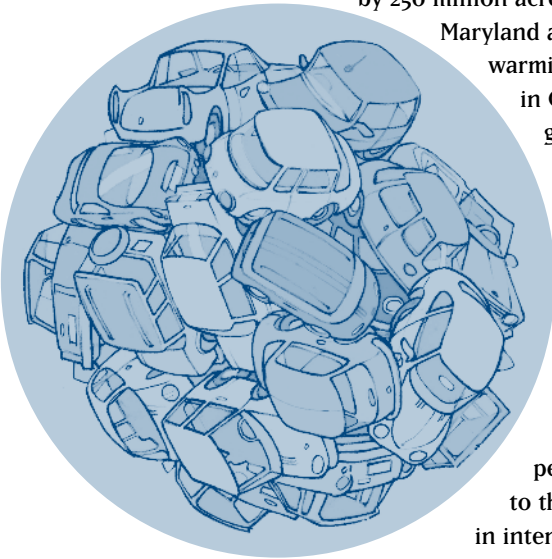
After carbon emissions caused by humans, deforestation is the second principle cause of atmospheric carbon dioxide. Irresponsible development is a major contributor to deforestation. Deforestation is responsible for 25% of all carbon emissions entering the atmosphere, by the burning and cutting of about 34 million acres of trees each year globally. In King, Pierce and Kittitas Counties alone 500,000 acres of forest land was changed to non-forest cover either temporarily through logging or permanently through urbanization between 1985 and 1999. The loss of forest land to housing also increases the need for more roads, longer distances traveled to rural areas and of course more greenhouse gas emissions.

How Can We Stop Global Warming?

With Al Gore's documentary, "An Inconvenient Truth" making the circuit, even more people are waking up to the reality of global warming and asking what they can do about it? Though Americans make up just 4 percent of the world's population, we produce 25 percent of the carbon dioxide pollution from fossil-fuel burning -- by far the largest share of any country. In fact, the United States emits more carbon dioxide than China, India and Japan, combined.

Unfortunately, our current administration has chosen not to participate in the global Kyoto Pact, but local leaders like Mayor Greg Nickels are setting an agenda to reduce greenhouse gasses locally. The City of Seattle has focused on the challenges of reducing traffic congestion, providing more efficient transportation alternatives, curbing urban sprawl by increasing affordable housing in the City, and stretching the available supply of renewable hydroelectricity through increased energy efficiency.

As individuals, we can all find ways to reduce our imprint on the earth by reducing our time spent in cars, switching to fluorescent light bulbs and other energy saving products, fully utilizing the recycling technology available and generally by consuming less (see inset for more ways you can stop global warming, p. 5)



[continued from p.1]

Best of all, supporting stronger growth management and opposing irresponsible development is a great way to help fight global warming. Smart growth reduces greenhouse gas emissions by: reducing development in rural and forest lands, increasing infill development aimed at providing housing and amenities in compact communities close to jobs, and improving transportation choices and reducing time spent in cars. By planning smarter, working with local concerned governments and people like you, we can make a significant difference in turning back global warming.

WHAT CAN YOU DO TO REDUCE GLOBAL WARMING?

Here are a few practical, everyday things you can do:

- Replace old appliances with energy efficient models
- Carpool with a friend
- Use compact fluorescent bulbs instead of standard light bulbs
- Wash laundry in warm or cold water, not hot
- Reduce your garbage by 25%
- Insulate walls or ceilings, and lower heating bills
- Use vehicles that get good gas mileage or trade in your most used car for a hybrid, biodeisel, electric or more energy efficient model
- Recycle all that you are allowed with your home waste service
- Support public transportation by using it often
- Don't sit in an idle car
- Reduce your consumption-only buy what you need
- Close doors in unused rooms to save on heating
- Keep windows and fireplace flues closed when the heat is on
- Choose energy efficient windows and doors when updating or building
- Ask your employer if you can work from home 1-2 days a week
- Run your dishwasher only when it is full
- Don't buy over-packaged goods
- Vote for candidates who demand action to fight climate change
- Vote Yes for Initiative 937, Washington's Clean Energy Initiative. It is our chance to determine our energy future. As Washington's demand for energy grows, we have the opportunity to get our electricity from cleaner, cheaper renewable energy like wind and solar power and energy conservation—produced right here in the Northwest.

The Campaign is meeting the challenge of educating voters about I-933. It has mounted one of the largest field operations ever run for an initiative in Washington – aiming to reach 140,000 voters with personal contacts — and is running an aggressive TV and mail program.

But your help is critical to our success – to making sure voters are exposed to more than the ballot title. If you haven't invested time and money into this effort, now is the time to do it. We cannot afford to let this initiative pass. Visit www.NoOn933.org today for information and opportunities to contribute time or money.

A National Far Right Wing Conspiracy

Washington State is not alone in this fight. One of the frightening things about I-933 is that it's part of a well-funded and highly orchestrated effort to roll back laws across the country. The single biggest donor to the Yes on 933 Campaign (over \$200,000 as this article went to print) is a Chicago-based organization called Americans for Limited Government (ALG). ALG spent literally millions of dollars this summer placing similar initiatives on the ballot in six different states – Washington, California, Idaho, Montana, Nevada, and Arizona. Washington's measure is substantially more radical and sweeping than the other states.

The initiatives were thrown off the ballot by legal challenges in Montana and Nevada, leaving a takings initiative before the voters in four states this November.

Futurewise is collaborating and sharing information with the groups opposing these initiatives in the other states to help improve everyone's odds of success.

LEGAL PROGRAM UPDATE

FUTUREWISE APPEALS PROTECT WORKING FARMS, PUGET SOUND, AND HOOD CANAL

Tim Trohimovich, Futurewise Planning Director

It was a busy summer for Futurewise's Legal Program. Futurewise and its cooperating attorney program chocked up wins that protected working farms, rural areas, Hood Canal, and Puget Sound.

In 2003, Futurewise appealed a decision by Snohomish County to de-designate the MacAngus Ranches, Inc. property with 216 acres currently used to pasture cattle. The land is adjacent to other designated farmland. The Central Puget Sound Growth Management Hearings Board (Central Board) concluded that the land still qualified as agricultural lands of long-term commercial significance. The county and property owners appealed to Supreme Court, which reversed the Central Board. Futurewise then appealed and this summer the Court of Appeals, Washington State's second highest court, ruled that the Central Board was correct when it concluded that the MacAngus Ranches should continue to be designated as agricultural lands of long-term commercial significance. Snohomish County and the property owner have

filed a motion for reconsideration. Futurewise has filed an answer arguing that the Court of Appeal's MacAngus Ranches decision is consistent with the Supreme Court's holdings.

Futurewise, several statewide and Kitsap County organizations, and a couple of property owners (referred to as the Hood Canal appellants) appealed two aspects of the Kitsap County critical areas ordinance (CAO). The Central Board held that the Kitsap County critical areas regulations had not adequately protected Puget Sound and Hood Canal with a 35-foot wide marine buffer

that applied to 68 percent of the county's marine shorelines. The Central Board also agreed that exempting wetlands smaller than 7,500 square feet would result in loss of wetland functions in violation of the Growth Management Act (GMA). The appeal filed by Futurewise was consolidated with an appeal filed by the Kitsap Alliance of Property Owners (KAPO). KAPO had advocated for weakening the county's critical areas regulations. While the Board ruled in favor of all of Futurewise's issues, the Central Board ruled against KAPO on all of their issues. Alexandria Doolittle provided pro bono services on this appeal.

In September, the Western Washington Growth Management Hearings Board ruled in favor of Futurewise and three local partners in *Futurewise v. Lewis County*. The County had expanded the urban growth areas for the cities of Winlock, Napavine and Chehalis without adequate justification. The County failed to show justification for the Napavine and Chehalis expansions, and the Winlock expansion included land that should have been designated agricultural resource lands. The Hearings Board (Western Board) ruled that the urban growth areas for Chehalis, and Morton, and Napavine in Lewis County violated the GMA since the record did not show the expansions were needed to accommodate the county's new growth target. On a motion for reconsideration, the Board held that the Winlock urban growth area complied with the GMA.

As summer drew to a close, the Central Board upheld Futurewise's challenge to Snohomish County's 2005 comprehensive plan update on the issues of changing a farm center from an agricultural comprehensive plan designation, including the farm center in the urban growth area, and allowing sewer extensions into the rural area, which encourages urban style development in rural areas. A farm center is the part of the farm that includes farm dwellings, barns, and outbuildings. The types of buildings are necessary to maintaining farming operations. The Central Board ruled against our challenges to two other urban growth area expansions and the county's transportation and capital facilities elements.

This story continues in counties across the state as the update process unfolds. Futurewise's organizing, advocacy, and legal challenges are strengthening communities and protections in Puget Sound and around Washington.

Futurewise is working with local activists to protect Kitsap County shorelines from inadequate marine buffers that allow development too close to the shore.



Futurewise is beneficiary of the Parsons GoodWorks Social Hour!

Futurewise was the beneficiary at the inaugural Parsons GoodWorks Social Hour on September 26, raising \$400 to help support our efforts to defeat Initiative 933. Futurewise was selected by Parsons founder, Joanie Parsons, who is also a member of the Futurewise Board of Director. A core value of the Parsons Public Relations team is giving back to the local and global communities in which they work, live and play.

Parsons Public Relations provides strategic, senior-level communications and marketing services for sustainably minded companies and organizations. In addition to the fundraising event, Parsons has provided pro-bono branding strategies and communication pieces for Futurewise. A big thank you to Joanie and the Parsons team!



Don't have the time to enjoy a healthy lifestyle? Think again!

Pioneer Organics is offering a special promotion for Futurewise members. You'll save \$15 off your first order when you sign up for delivery service. Pioneer Organics works with organic farmers, ranchers, dairies, and other creators of organic products to make organics more accessible. They deliver farm fresh organic produce and natural groceries right to your door. 100% Satisfaction Guarantee.

Sign up for service at www.PioneerOrganics.com or call 206.632.3424 and get \$15.00 off your first order by using offer code "Futurewise." in the referral field when you sign up.



REGIONAL TRANSPORTATION INVESTMENT DISTRICT CALLS FOR PUBLIC COMMENTS

RTID, the Regional Transportation Investment District, is collecting public comments to help them decide where to make regional road investments. The comment period closes Oct. 27, 2006, so now is the time to tell them what roads you're most concerned about and what improvements you think need to be made. Sharing your ideas with RTID is easy to do—just take their online survey at www.rtid.org. This confidential survey is being conducted for RTID by an independent firm.

One of RTID's guiding principles is to keep the road investments affordable – so they will have to make choices about where to invest limited dollars. That's why RTID wants to know what your priorities are. In addition to taking the survey, you can **e-mail RTID** and visit their website for more information: www.rtid.org.

RTID was created by the state Legislature and charged with developing a transportation package that addresses congestion, safety, and improves significant roads and bridges in Snohomish, King and Pierce counties. RTID is coordinating with Sound Transit to develop a Roads & Transit package to submit to voters in November 2007.

At Futurewise we are fortunate to have so many dedicated and passionate volunteers who care about growth management and protecting Washington's future. Occasionally we like to highlight individuals who go above and beyond the call of duty. In this issue of Outlook, we are profiling two Futurewise Board Members that have gone the extra mile on making sure that Initiative 933 does not pass in Washington this November.

Sandra Romero

Sandra Romero joined the Futurewise Board of Directors last year after returning from Pakistan as a Senior Resident Program Director for the National Democratic Institute for International Affairs. The previous summer she took part in political party youth leader training in Cambodia. Sandra spent 12 years in the Washington State Legislature representing Washington State's Capital city area. She has chaired the House Local Government and State Government Committees. Before her election to the House, she served as Democratic Caucus staff and staff to a State Representative. Sandra has also served on the Olympia City Council and the Granite Falls School Board.



Sandra Romero

Sandra has also presented papers on Growth Management and Land use Planning to the Asian Pacific Conference on the Environment and Economic Development and at Pannestra University in Phnom Penh, Cambodia and is a former journalist.

Sandra has clearly accomplished a lot in her career and in the public sector, but she probably never imagined that she would become so involved in land use issues in Thurston County when she joined the Futurewise Board. Sandra jumped in with both feet as the county began their major update to the comprehensive plan and critical areas ordinance (CAO). Thurston County's critical areas ordinance has been especially contentious. Last year, local land use opponents sent a mailer to 9,000 rural residents telling them they wouldn't be able to mow their lawn or keep a horse (both of which were completely untrue, of course), prompting hundreds of angry residents to show up for a planning commission hearing.



Jodie Vice

Sandra and Futurewise quickly recruited coalition partners and organized a set of local leaders to demonstrate support for stronger community protections. With Futurewise's support, these activists — calling themselves "Livable Thurston" — have done an excellent job of demonstrating visible public support for stronger protections during the CAO and comprehensive plan updates.

Currently, Sandra is co-chairing the Thurston County "No On 933" efforts along with Peggy Bruton of the League of Women Voters. She has worked hard to rally volunteers; run phone banks; set up speaking engagements; organize doorbelling, yard sign distribution and fundraisers to defeat this destructive initiative.

Jodie Vice

Jodie Vice joined the Futurewise Board in 2003, and has been an active member of the Fundraising and Urban Development committees. Jodie was also one of our most dedicated volunteers from the R-51 campaign. Jodie previously was a planner at Otak, Inc., a Northwest-based firm that specializes in architecture, civil engineering, surveying and mapping, and other urban design issues. At Otak, she participated in planning-related work, including numerous non-motorized transportation plans, corridor studies and planning documents.

Jodie recently left her position at Otak and is giving at least 3 full days a week as a volunteer to the No on 933 campaign. Jodie is actively working to educate the planning and architecture community about the extremely dangerous impacts of 933, recruiting volunteers and organizing fundraising events. Additionally, Jodie is organizing in counties that do not have campaign staff assigned to them to make sure that our reach is statewide. She is personally participating in numerous phonebanking shifts to educate voters and ask them to vote "No" on Initiative 933.

We can't thank Sandra and Jodie enough for their time, energy and passion. When we defeat Initiative 933, it will be because of people like Sandra, Jodie and the numerous other volunteers who are giving it all they have.

Thank you Sandra and Jodie!

TRANSITIONS



Futurewise is excited to welcome **Kitty Klitzke**, as our new Eastern Washington Field Organizer. Kitty Klitzke is an environmental and social justice advocate from Spokane, WA. Her service in the US Army inspired her to seek out a better way to save her country and the planet. While majoring in Art in college, she got involved in the Fair Trade and Environmental movements. Kitty is also the Volunteer and Community Outreach Coordinator at The Lands Council.



We are also delighted to announce that **Keith Scully** will be joining us as our new Legal Director in November. Keith is relocating from Amsterdam where he has been a prosecutor at the International Criminal Tribunal for the Former Yugoslavia. He is a graduate of New York University School of Law, and previously worked as a Deputy Prosecuting Attorney at the King County Prosecuting Attorney's Office. Keith is anxious to catch up with his wife Jennifer, and two children, Katie, age 6, and Finnegan, age 4, here in the states. He is an avid outdoors person, gear junkie and volunteer, who spends most of his free time on playgrounds these days.



We are grateful to have had **Alex Doolittle** join us as our Interim Legal Director. She is a Cooperating Attorney for Futurewise, and graciously filled in while Keith and his family relocated to the states.

We also want to extend a warm welcome to our Legal Intern, **Brock Howell**. Brock joined us this summer and has been busy working on legal appeals in Pierce and Pend Oreille Counties, as well other legal work in Clark and Snohomish Counties. Brock is currently attending Vermont Law School, is a WSU graduate in agricultural economics, and is from Prosser, Washington. Brock is interested in land use policy, growth management and environmental law.



Futurewise also bids farewell to **Ellen Gray**, our Program Director in Whatcom and Skagit counties for the past five years. Ellen has been a long time land use advocate and has made a tremendous difference in protecting our environment and quality of life. Ellen is moving on to work for another great organization, the Washington State Sustainable Food & Farming Network. We wish her the best of luck in her new position and thank her for her dedication to Futurewise.

FEATURING THE BEST OF WASHINGTON

Restaurants

Carmelita
 The Herb Farm
 I Love Thai Cooking
 Kaspar's Special Events & Catering
 Ray's Boathouse, Cafe & Catering
 Salty's on Alki Beach
 Six Seven

Wineries

Amavi Cellars
 Boudreaux Cellars
 Chinook Wines
 Hightower Cellars
 McCrea Cellars
 OS Winery
 Pepper Bridge Winery
 Sockeye Winery
 Woodward Canyon Winery

Producers

Barnes & Watson Fine Teas
 Beecher's Handmade Cheese
 Craven Farm
 Crown S Ranch
 Dog Mountain Farm
 Helsing Junction Farm
 Jerzy Boyz Farm
 Ninety Farms
 Ocean Spray
 Pioneer Organics
 Small Planet Tofu
 Taylor Shellfish Farms

WHAT'S HAPPENING

Join Us!

A Feast with Friends -Tickets on Sale Now Thursday, November 9th 6:00-9:00pm

This year's wine event is expected to draw a big crowd thanks to the generosity of local restaurants, farms, and wineries who support sustainable practices and the work of Futurewise. Unlike the wine mixers of previous years, you will have a chance to sample the unique creations of guest chefs made from fresh Northwest ingredients. Each mouth-watering morsel in turn will be paired with some of the best Washington wines.

A Feast with Friends will take place at Kaspar's Special Events and Catering located at 19 West Harrison, Seattle, WA 98119. Doors will be open at 6:00pm until 9:00pm. In keeping with the theme a limited silent auction will feature food and wine related items that will prove irresistible to a food and wine connoisseur. Bid on a private Thai cooking lesson, premium magnums signed by the winemaker, a private barrel tasting and tour for ten and much more!

Space is limited—reserve your spot today by calling Chieu Van with a Visa or Mastercard ready. Feeling generous? Buy a ticket at the \$100 host level as all proceeds will support the mission of Futurewise to promote healthy communities and cities while protecting farmland, forests and shorelines for this and future generations. Don't miss this food and wine celebration of the year!

Ticket Prices

\$40 general Admission
 \$100 Event Host (1 ticket)
 \$250 Chef's Choice (2 tickets)
 \$500 tasting Sponsor (2 tickets)

Music will be provided by the Ev Stern Trio

Special Thanks to our Event Sponsors



SAVE THE DATE



Non-Profit Comedy

Tuesday, February 27, 2007

It was so funny the first time that we are doing it again! Mark your calendars for Non-Profit Comedy, a benefit show for Futurewise with thoughtful, mostly political comedy from some of Seattle's best comics! Half of the ticket proceeds will help Futurewise to continue our work on strengthening growth management protections to keep Washington State healthy and beautiful for years to come. Spread the word and join us for a night on the town at the Comedy Underground at 222 S Main St, under Swannie's Sports Bar in Pioneer Square. Tickets are \$10 at the door and \$5 for students with ID.



Fiesta Futurewise – Hot! Hot! Hot! Dinner & Auction

Saturday, May 5, 2007

Plans are already underway for Fiesta Futurewise, our largest annual fundraiser. This year's event will feature a Live and Silent auction, live Salsa music and plenty of festive fun as we celebrate Cinco de Mayo and the work of Futurewise.

Sponsorship Tables Available Now! Ensure your spot at the hottest event of the year by becoming a sponsor. You'll have preferred seating, an ad in the catalog, and recognition at the event. Even better, you'll be supporting the work of Futurewise! Sponsor levels start at \$1250, \$2500 and \$5000. Visit www.futurewise.org/action/events for details on sponsor benefits or call Angela Uhl at 206-343-0681 or at angela@futurewise.org.

Want to donate an item? Our auction features many terrific auction items such as dinner gift certificates, arts & crafts, household items, sports equipment, vacation homes and trips, services ranging from beauty, massage and catering to legal services. For a donation form visit www.futurewise.org/action/events or call Chieu Van at 206-343-0681 or at chieu@futurewise.org.

